

TERENZI SRL has been a center of expertise for **57 years**.

Specialized in the **industrial processing** of **METALS** and **PLASTICS**,

creates **PRODUCTS** with technical or design **COMPONENTS** providing integrated **SERVICES**



Metal



Termoplastic Polymers



AREAS OF EXPERTISE

- **TECHNICAL AREA:** co-design, research and development, engineering, planning
- **TOOLING:** design and construction of progressive, transfer and recovery molds for shearing and drawing of sheet metal and for thermoplastic injection and/or overmolding
- **SHEARING:** cold deformation of metals
- **CARPENTRY:** bending, welding, drawing and threading also with combined technology
- **MOLDING:** thermoplastic injection processing of polymers
- **ASSEMBLY:** manual mechanical, electrical and wiring assembly; provision of CE certifications
- **LOGISTICS:** automatic warehouse storage



TECHNOLOGIES

CAM-CAD programming



Mold design and manufacturing

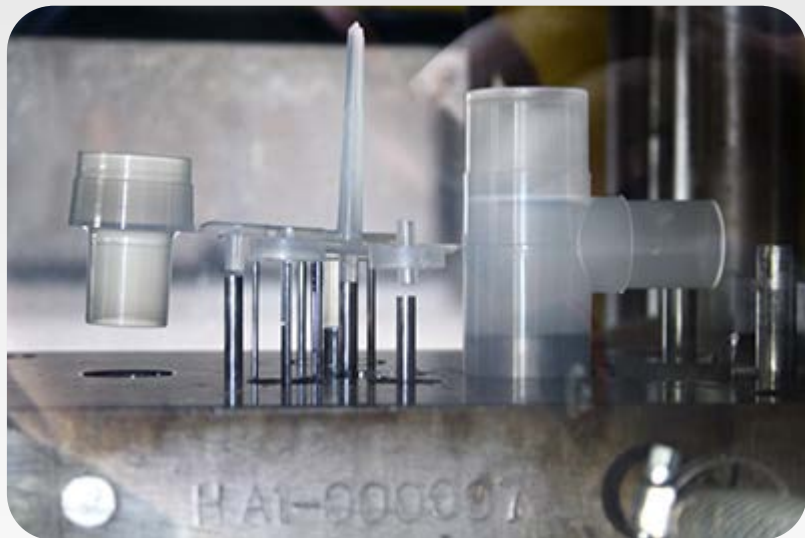


Fiber laser cutting



TECHNOLOGIES

Thermoplastic molding of polymers



Cold blanking of metals



Folding



TECHNOLOGIES

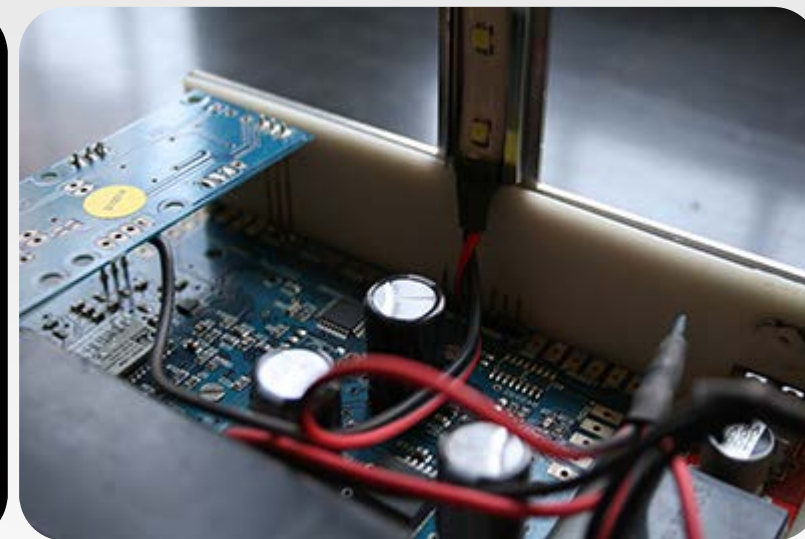
Milling



Welding



Assembly and Wiring

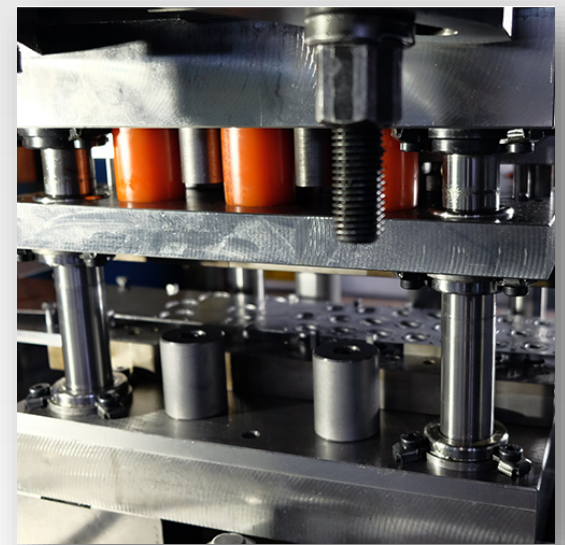
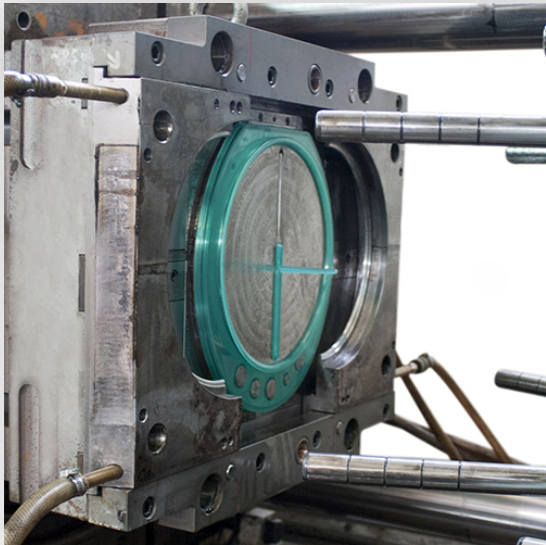


Design and construction of **PROGRESSIVE, TRANSFER, RECOVERY MOLDS** for shearing and drawing of sheet metal and molds for **INJECTION** and/or **OVERMOLDING** with polymers.



TOOLING

E.g. Thermoplastic moulding, progressive moulds, transfers for serial production



MECHANICAL PRESSES

HYDRAULIC PRESSES

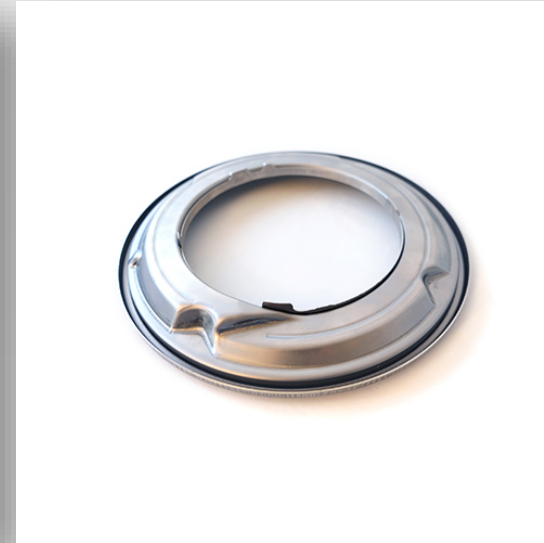
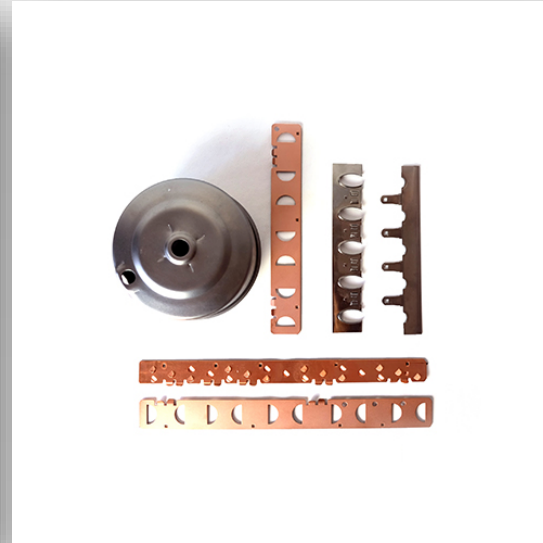
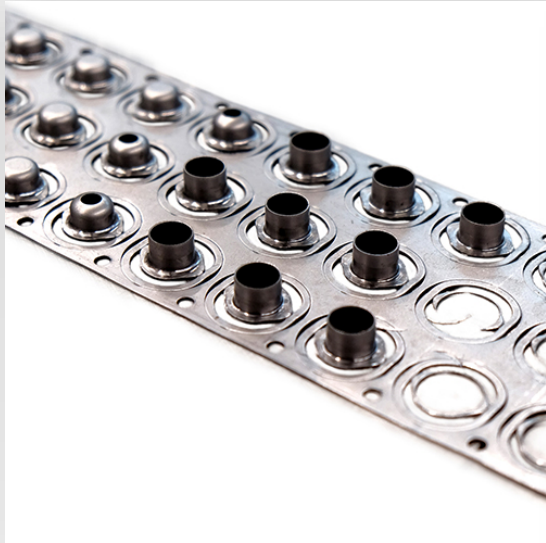
LEVER DRIVE PRESSES



From 45 to 500 tons equipped with interlocks for automatic or manual production

SHEARING

E.g. Shearing and drawing made with progressive, transfer and recovery molds



2000 watt **FIBER LASER CUTTING** with automatic supply and unloading+**COMBINED LASER/ELECTROCHEMICAL MARKING MACHINES**
(laser and punching, drawing, threading and folding) with automatic loading/unloading
100 and 130 ton **PRESS BRAKES** with automatic mold exchange High precision **FIBER LASER WELDING** for production or mechanical
repairs/molds, **POINTS, PROJECTION** of pins Automatic **SATIN/BRUSHING MACHINES**



CARPENTRY

E.g. Projection welding of pins and press bending processes



Es. Stampaggio a iniezione termoplastica, sovrastampaggio plastica/metallo e stampaggio UV

INJECTION PRESSES, mechanical and electric from 60 tons to 350 tons

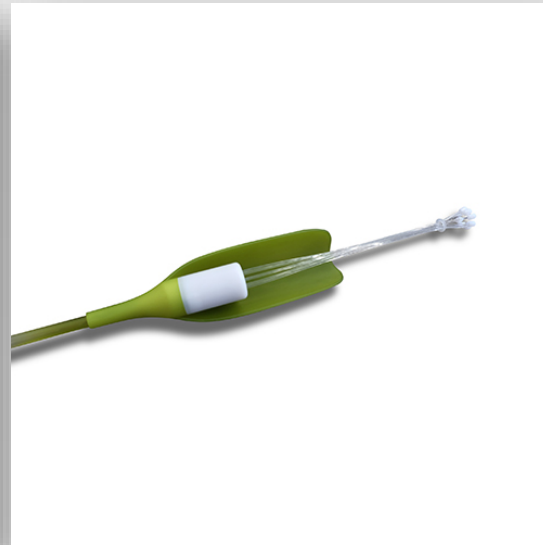
ANTHROPOMORPHIC ROBOTS for unloading molded parts

UV flat bed PRINTER with 2500x1300 mm surface



PRINTING

Ex. Thermoplastic injection molding, plastic/metal overmolding and UV molding



MECHANICAL, ELECTRONIC ASSEMBLY and ELECTRICAL WIRING, aimed at the supply of semi-assembled or finished products CE

ELECTRICAL CERTIFICATIONS

AUTOMATIC vertical storage WAREHOUSES connected to the management system



ASSEMBLY and WIRING

E.g. Mechanical, electronic and wiring assemblies



AUTOMATIC WAREHOUSES connected to the management system for storage/supply management **BELTS** in carbon steel, galvanized or stainless steel, brass, copper, bronze, aluminium; thickness from 0.4 mm to 3 mm – length from 20 mm to 600 mm
POLYMERS of various types (e.g. PMMA, PC, PET, ABS, PA, PP)



LOGISTIC

E.g. Storage of metal coils, plates and moulds





THANK YOU

Our productions,
always attentive to **Quality** and the **Environment**, are made using
self-produced renewable energy.

