



our company



## Precision mechanical works for over 40 years

B&B Metalwork was born from the passion and experience of Gio Batta Buzzacchero, who for over forty years has contributed to the professional growth of his children and his collaborators by conveying his knowledge and experience about mechanical manufacturing. Over the years the company, under the guidance of Annika and Pierluigi Buzzacchero, has embraced technological and process innovations: in 2016 it was awarded the ISO 9001-2008 certification, and today also the UNI EN ISO 9001: 2015 certification.

B&B MetalWork's customers operate in various sectors, such as robotics, food, wood, printing, plastics (injection, molding), presses, industrial cylinders of various sizes etc.

## The trustworthy partner for your mechanical projects

Over the years we have developed a customer portfolio that relies on us on a daily basis, and has gained an excellent reputation for our turning and milling services. With B&B Metalwork all you get is high quality workmanship in record times.

We constantly invest in the latest turning and milling technologies that we combine with traditional methods. That allows our team to produce the best quality components and CNC-turned and machined parts at the best price.

## The industrial rollers specialists

Among our various processes, we boast thirty years of experience in the production of FE industrial rollers. The production department of B&B Metalwork has machinery equipped to face any technical challenge, reasoning together with the customer on the best possible solution. We are able to work on pieces that include very complex cycles, to make mechanical rollers of all types and sizes, up to a diameter of 1000mm x 6000 in length.



machinery



## Complete instrumentation for all types of processing

Thanks to the machine tools available, we carry out very different precision machining, depending on the material, the degree of precision and many other factors that we know and deal with professionally and along with the customer. Our equipment comprises the following:

### Turning department

#### PARALLEL LATHES

- Parallel lathe with working range up to  $\varnothing$  1000x5000mm
- Parallel lathe with working range up to  $\varnothing$  350x5000mm
- Parallel lathe with working range up to  $\varnothing$  600x3000mm
- Parallel lathe with working range up to  $\varnothing$  250x1200mm

#### CNC LATHES

- "Biglia" CNC lathe with working range up to  $\varnothing$  315x1200mm (Equipped for small series work)
- "YCM motorized" CNC lathe with working range up to  $\varnothing$  200mm bar passage  $\varnothing$ 50mm length between centers 560mm
- Motorized YMT CNC lathe with working range up to  $\varnothing$  700mm x 3200 mm in length (new machine)
- CNC "Mach" lathe with working range  $\varnothing$  150 x300mm



machinery



## Milling department

---

We carry out Milling operations on complex shapes of metal parts.

- "Dart" work center with 1000x500x700mm working range
- "FULLAND" machining center TABLE 500x1200 mm HEIGHT 500 mm, WITH FOURTH AXIS.
- "Novar" fixed bench milling machine with 2200x800x1000H stroke and rotating head
- Universal milling cutter with stroke 1200x300x300mm

Other works

CUTTING DEPARTMENT WITH:

- Automatic Mep hacksaw
- Thomas jigsaws

WELDING DEPARTMENT COMPOSED OF:

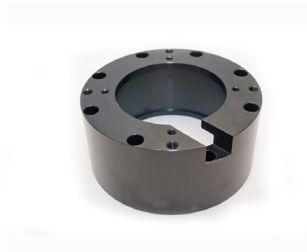
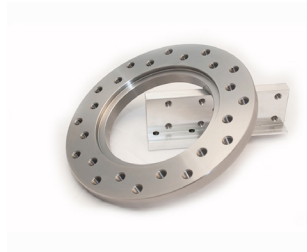
- "Selco" wire and Tig welding machine
- Automated welding machine for continuous welding processes

## External processing with trusted partners

---

Galvanizing  
Boring  
Tempra  
Anodizing  
Correction  
Dynamic balance  
Broaching  
Teething

Some works





**METALWORK**  
**ROLLER SPECIALISTS**

B&B METALWORK  
Via Due Camini, 27  
36010 Zanè (VI)

C. F. e PIVA: 04250670249 – R.E.A. 299726  
Tel. 0445/31 51 68 | Fax 0445/315968  
e-mail: [info@bebmetalwork.it](mailto:info@bebmetalwork.it)

VISIT OUR NEW SITE  
[www.bebmetalwork.it](http://www.bebmetalwork.it)